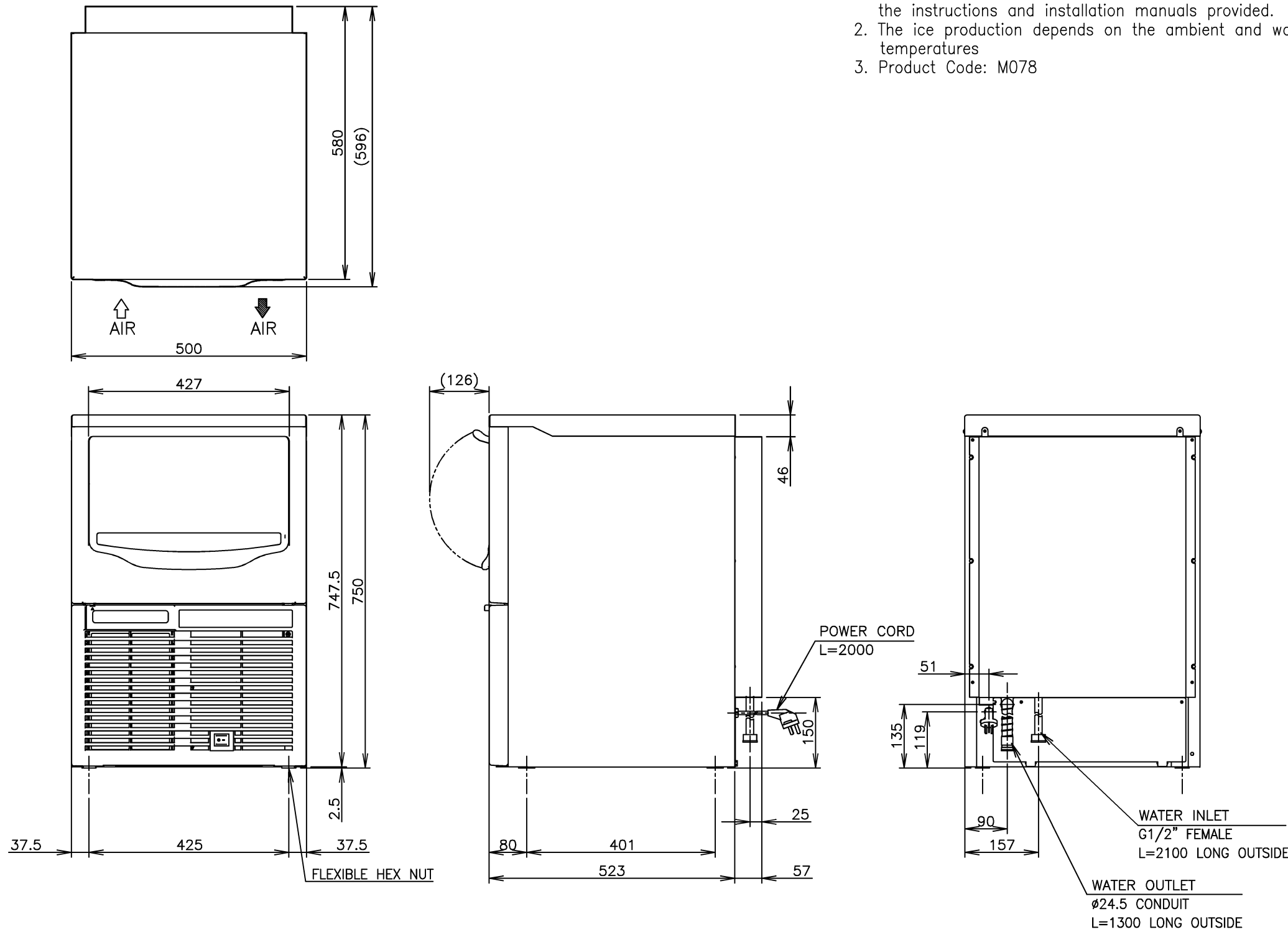


OPERATING CONDITIONS	Ambient Temp.: 5-38°C; Water Supply Temp.: 5-32°C
	Water Supply Pressure: 0.07-0.55MPa (0.7-5.5bar)
	Voltage Range: 198-254V

*We reserve the right to make changes in specifications and design without prior notice.

1. Install the ice maker properly in accordance with the instructions on location, water supply/drain connections and electrical connections stated in the instructions and installation manuals provided.
2. The ice production depends on the ambient and water temperatures
3. Product Code: M078

ITEM	ICE MATE SELF-CONTAINED TYPE RHOMBIC ICE MAKER
MODEL	SRM-45A
POWER SUPPLY	1 Phase 220-240V 50Hz
RATED AMPERAGE	2.05A (Ambient Temp.32°C, Water Temp.21°C)
STARTING AMPERAGE	15.5A
ELECTRIC CONSUMPTION	287W
POWER FACTOR	67%
POWER CAPACITY	Min 0.92kVA (2.94A)
ICE PRODUCTION PER 24h	Approx.46kg/24h (Ambient Temp.10°C, Water Temp.10°C) Approx.41kg/24h (Ambient Temp.21°C, Water Temp.15°C) Approx.35kg/24h (Ambient Temp.32°C, Water Temp.21°C)
WATER CONSUMPTION PER 24h	Approx.82.0L/24h (Ambient Temp.10°C, Water Temp.10°C) Approx.75.5L/24h (Ambient Temp.21°C, Water Temp.15°C) Approx.63.4L/24h (Ambient Temp.32°C, Water Temp.21°C)
SHAPE OF ICE	Cube
FREEZE CYCLE TIME	Approx.18min (Ambient Temp.21°C, Water Temp.15°C)
ICE PRODUCTION PER CYCLE	Approx.0.5kg/55pcs (Ambient Temp.21°C, Water Temp.15°C)
MAX ICE STORAGE CAPACITY	14kg
OUTSIDE DIMENSIONS	500mm (W) x 580mm (D) x 750mm (H)
EXTERIOR	Front: Plastic, Top & sides: Stainless Steel, Rear: Galvanized Steel
INSULATION	Polyurethane Foam
FOAM BLOWING AGENT	Cyclopentane, without CFC, ODP: 0, GWP: 3
CONNECTIONS - ELECTRIC	Y-Type Connection
CONNECTIONS - WATER SUPPLY	Inlet G1/2" Internal Thread (connected at rear side)
CONNECTIONS - DRAIN	Outlet ϕ 24.5 (connected at rear side)
ICE MAKING SYSTEM	Vertical Evap, Jet Spray System On one side
HARVESTING SYSTEM	Hot Gas Defrost and Gravity
COMPRESSOR	Hermetic
CONDENSER	Fin and Tube type, Air-cooled
HEAT REJECTION	773W (665kcal/h) (Ambient Temp.32°C, Water Temp.21°C)
EVAPORATOR	Vertical, Copper Tube and Sheet (Surface Plating)
REFRIGERANT CONTROL	Capillary
REFRIGERANT CHARGE	R134a/160g
ICE MAKING CONTROL	Ice Thickness Sensor, Water Level Sensor, Timer
HARVESTING CONTROL	Ice Guide, Timer
BIN CONTROL	Bin Control Switch
ELECTRICAL PROTECTION	6.3A FUSE
COMPRESSOR PROTECTION	Auto-reset Overload Protector
ICE MAKER PROTECTION	Interlock by Controller Board
WEIGHT	Net: 36kg, Gross: 40kg
PACKAGE	Carton 625mm (W) x 716mm (D) x 875mm (H)
ACCESSORIES	Instruction Manual, Scoop



ICE MATE RHOMBIC ICE MAKER (SELF-CONTAINED TYPE) SRM-45A

APPROVED WAKATSUKI	CHECKED SHEN	DESIGNED WANG	DRAWN WANG	SCALE 1/10	TRIGONOMETRY
*	*	△	*****	DATE 2017.11.08	DRAWING NO. D21642
APPROVED	DESIGNED	SYMBOL	DATE		SYMBOL △